

RATINGS & CAPACITIES



Input : 750 MBH
Gross Output : 615 MBH

18.4 B.H.P. (180.2 kW)
Fuel : Natural Gas or Propane
Inlet Gas Pressure (NG) : 5 PSI Max.
Inlet Gas Pressure (LP) : 2 PSI Max.
(NG/LP) : 7" W.C. Min.
Operating Weight : 1,305 Lbs. (591.9 kg)

ELECTRICAL SUPPLY OPTIONS

120v/1ph/60hz:	7.5 Amps
208v/1ph/60hz:	6.6 Amps
230v/1ph/60hz:	6.4 Amps
208v/3ph/60hz:	6.0 Amps
230v/3ph/60hz:	6.0 Amps
460v/3ph/60hz:	3.0 Amps

ASME DESIGN DATA

Max. 160 PSIG & 250°F

TRIM & CONTROLS

High Temperature Limit	TSBC(EVS ONLY)
Flame Safeguard	RWF55(EVA/EVO ONLY)
High/Low Gas Press Switches	Pilot Gas Valve
Modulating Gas Valve	Pilot Gas Regulator
Operating Control	Pilot/Leak Test Cocks
Blower Motor, 1-1/2 HP	Combustion Air Switch
Water Flow Switch	Press. & Temp. Gauge
LWCO	Relief Valve
	VFD

DOUBLE BLOCK & BLEED(D.B.&B.) GAS TRAIN OPTION

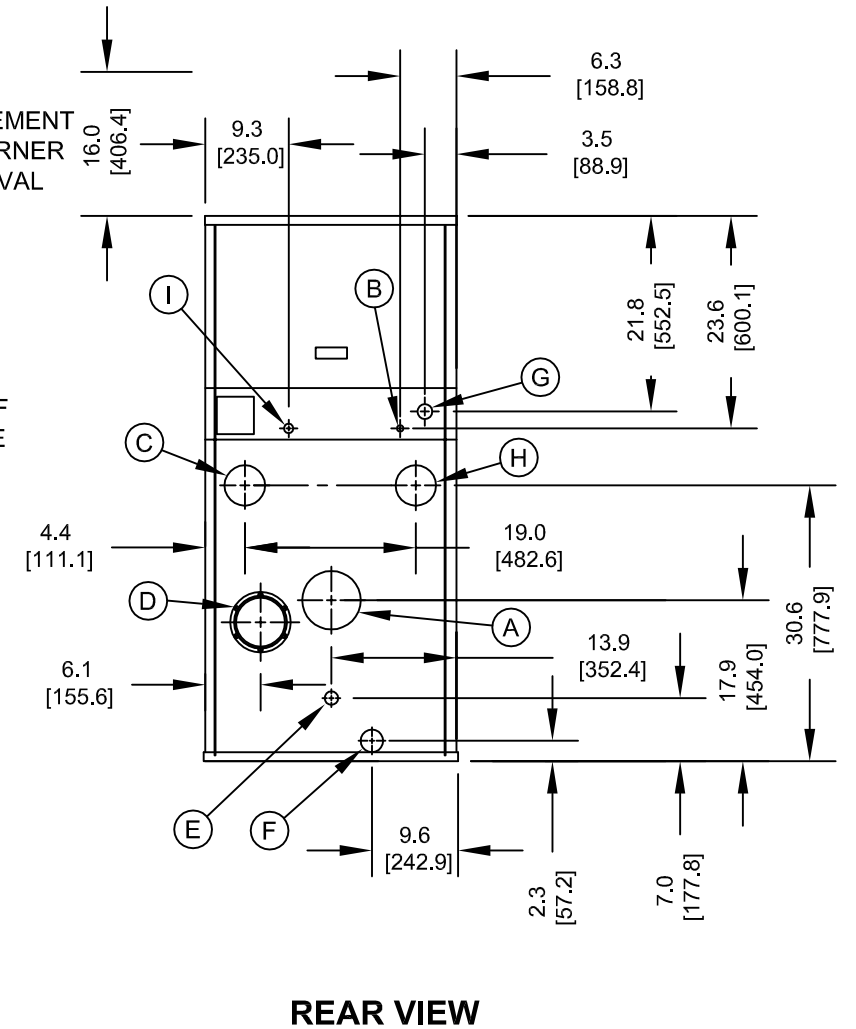
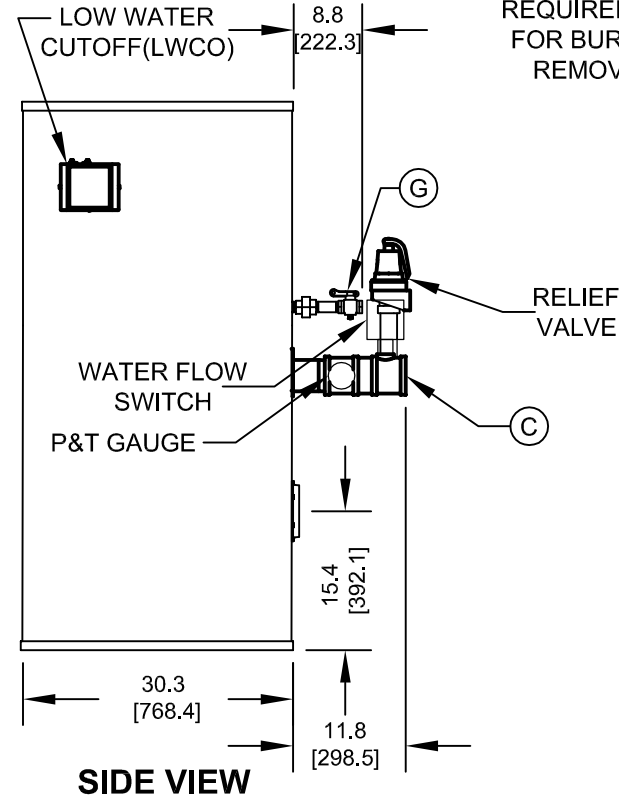
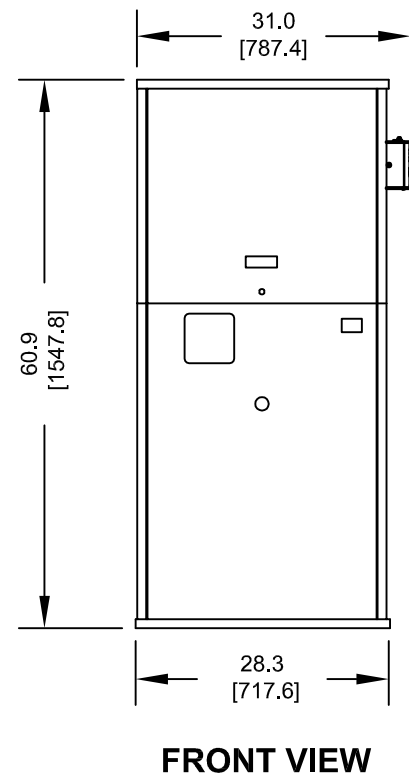
The following components are included in addition to above items when this option is used.
(1) Motorized Gas Valve, (1) Solenoid Gas Valve
N.O. Vent Valve

D.B.&B. W/ P.O.C. GAS TRAIN OPTION

The following components are included in addition to above items when this option is used.
(2) Motorized Gas Valves With Proof Of Closure switches
Flame Safeguard that recognizes proof of closure valves.
N.O. Vent Valve

NOTES:

1. SEE O&M FOR REQUIRED INSTALLATION CLEARANCES.
2. DIMENSIONS SHOWN ARE FOR REFERENCE ONLY.
3. DIMENSIONS ENCLOSED IN [] ARE IN MM.



CONNECTION	DESCRIPTION
(A)	FLUE OUTLET, 4" [101.6] DIAMETER (AL29-4C SS)
(B)	GAS PILOT, 1/4" [6.4] O.D. TUBE
(C)	WATER SUPPLY TO SYSTEM, 3" NPT
(D)	INLET AIR, 6" [152.4] DIAMETER
(E)	DRAIN, CONDENSATE, 5/8" [15.9] O.D. TUBE
(F)	DRAIN, BOILER, 1" NPT
(G)	GAS SUPPLY, 1" NPT
(H)	WATER RETURN FROM SYSTEM, 3" NPT
(I)	GAS VENT, 3/4" NPT (D.B.&B. & D.B.&B. w/POC ONLY)

**EVA/EVS/
EVO-750
WATER
HEATER**

Property of
**THERMAL
SOLUTIONS**
P.O. Box 3244, Lancaster, PA 17604-3244

Innovative Equipment For Hot Water Systems
www.thermalsolutions.com